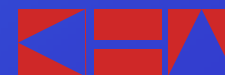




# Morriss / Gerault Road Transportation Analysis

Transportation Commission  
April 21, 2009

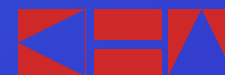


Kimley-Horn  
and Associates, Inc.



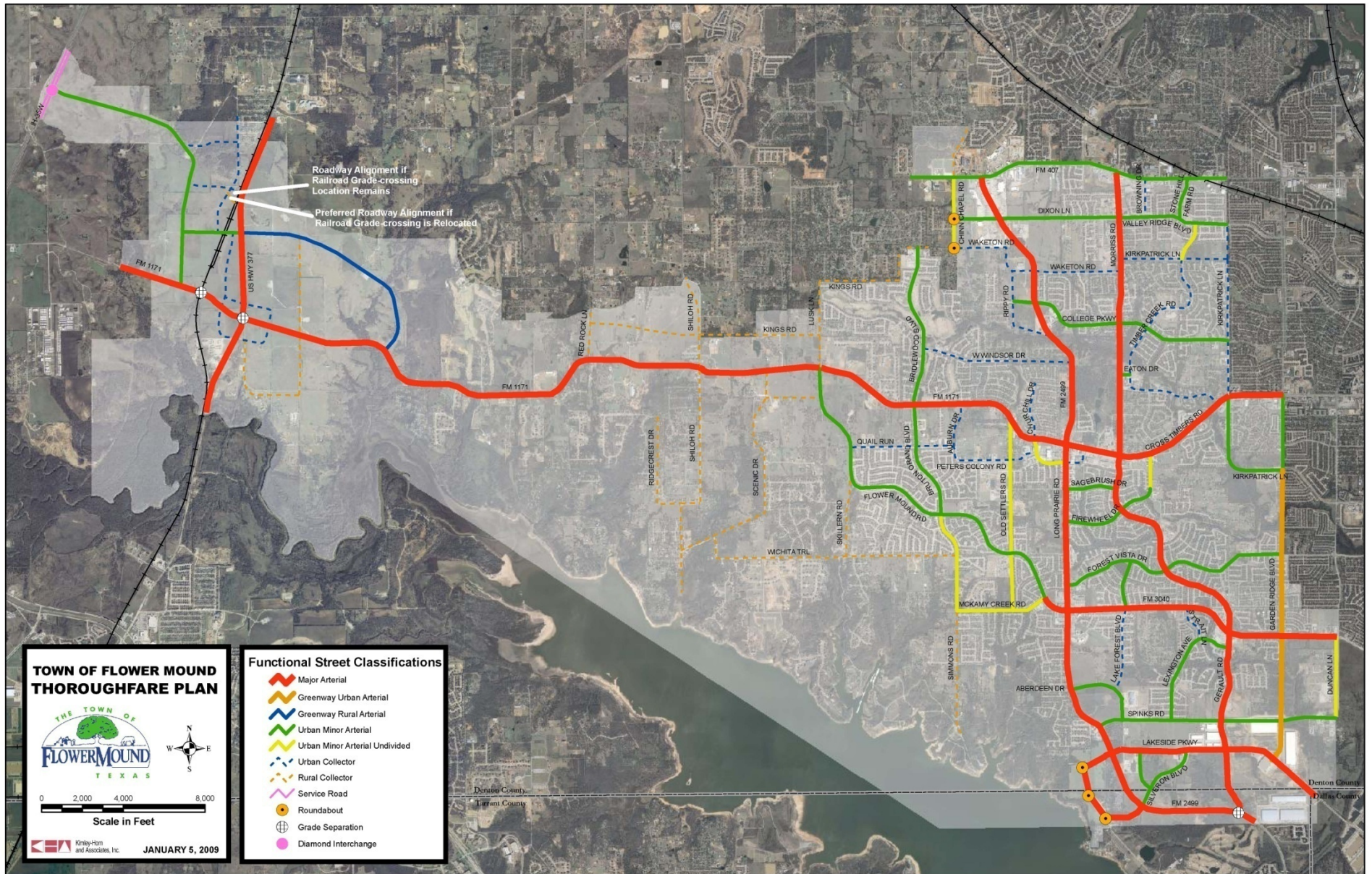
# Summary of Modeling Process

- Gathered existing traffic counts
- Evaluated existing traffic conditions
- Updated travel model to reflect existing land use and roadway network
- Validated model using existing traffic volumes
- Modified network to match proposed thoroughfare plan
- Modeled proposed thoroughfare plan using 2030 demographics



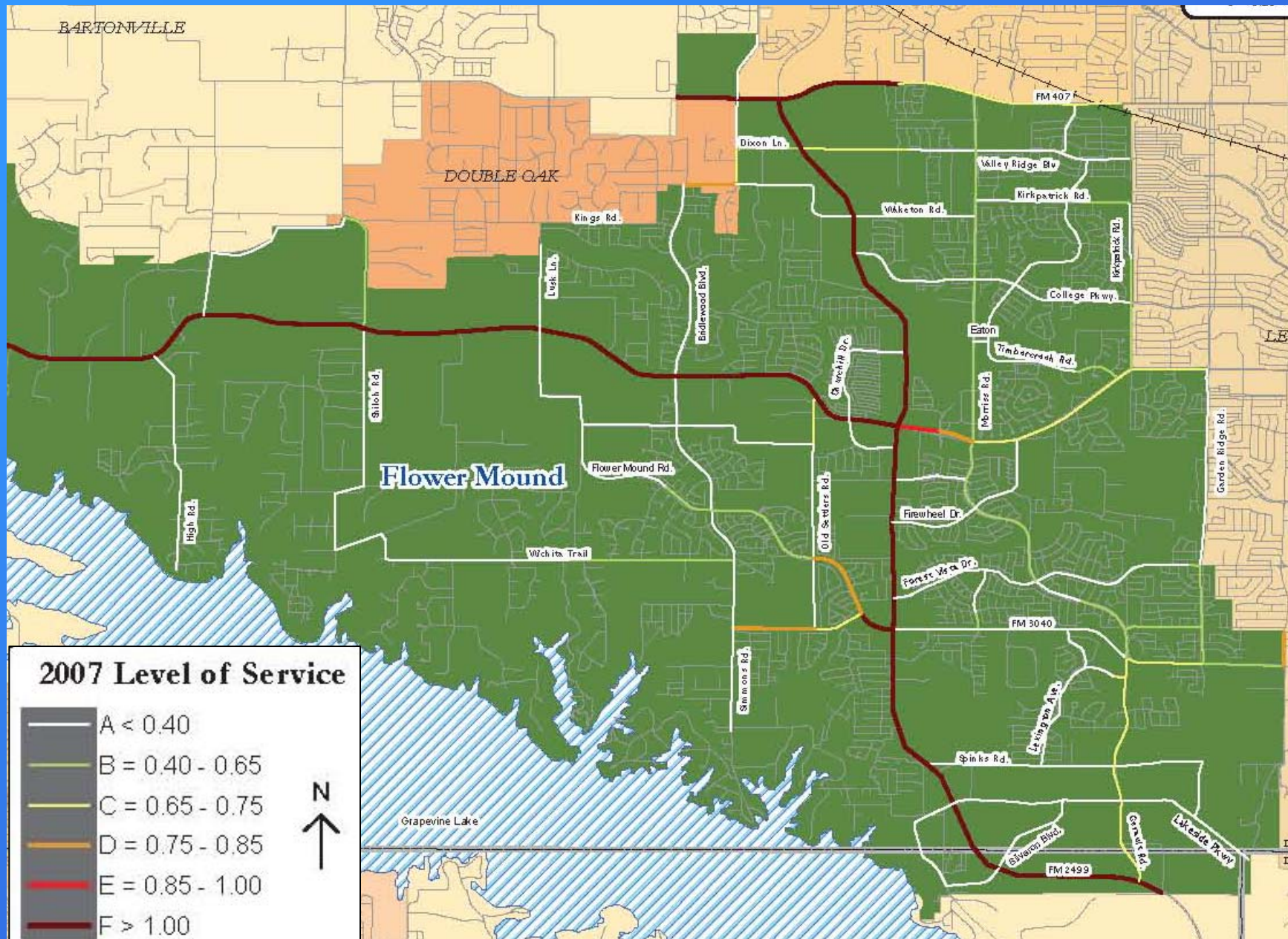
Kimley-Horn  
and Associates, Inc.

# 2009 Master Thoroughfare Plan

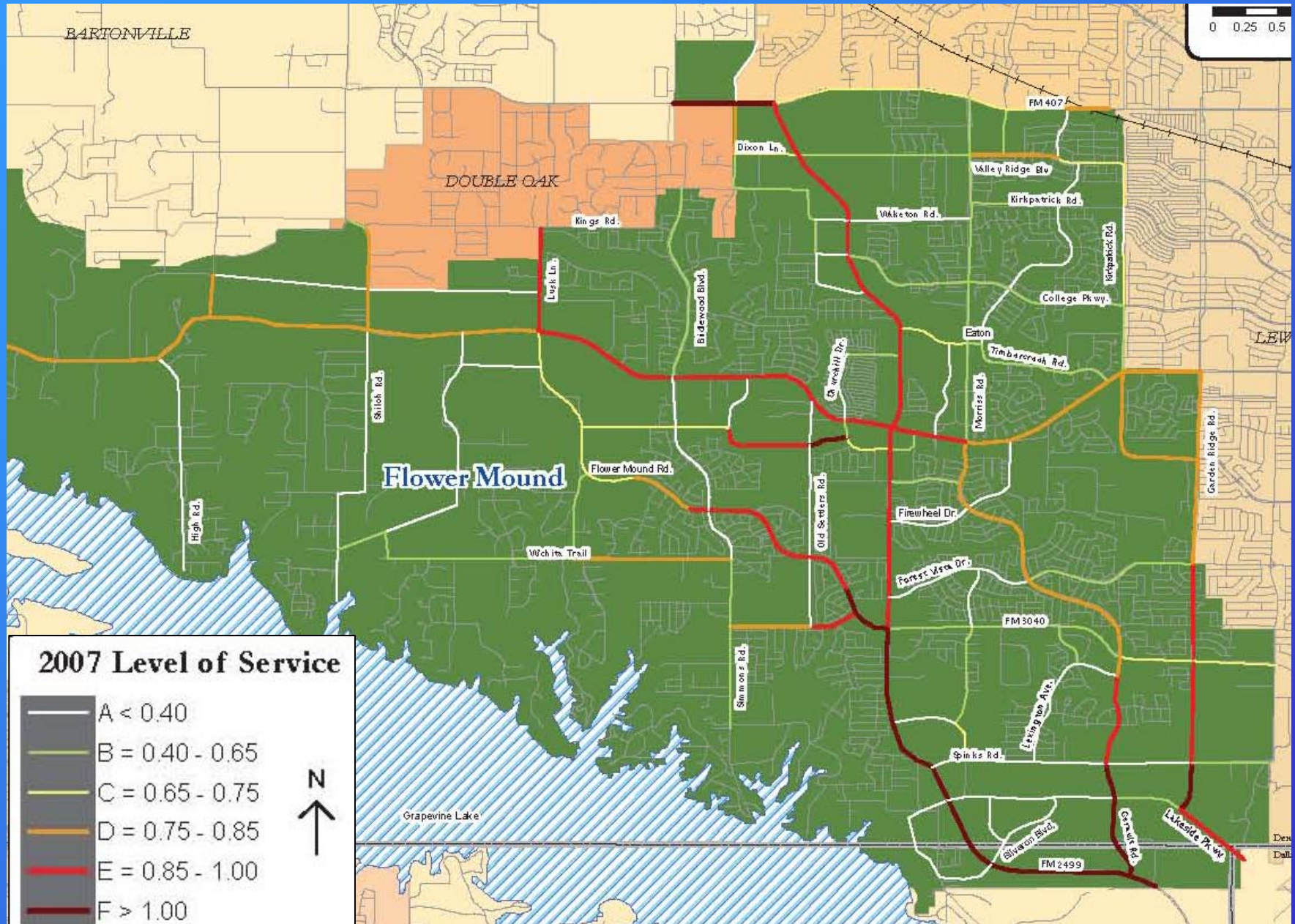




# Existing (2007) Level of Service



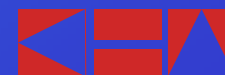
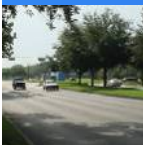
# Proposed MTP (2030) Level of Service





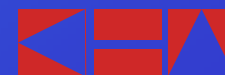
# Summary of Observations from Adopted Master Plan

- Gerault Road volumes (40-50k per day) warrant a six-lane section
- Gerault / Morriss Road volumes begin to decrease as you proceed north, but they still warrant a six-lane section
- Typical threshold for six-lane divided at an acceptable level of service is roughly 24,000 vehicles per day





# Questions?



Kimley-Horn  
and Associates, Inc.