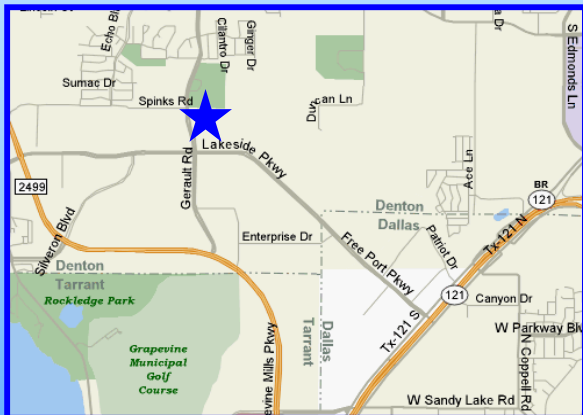
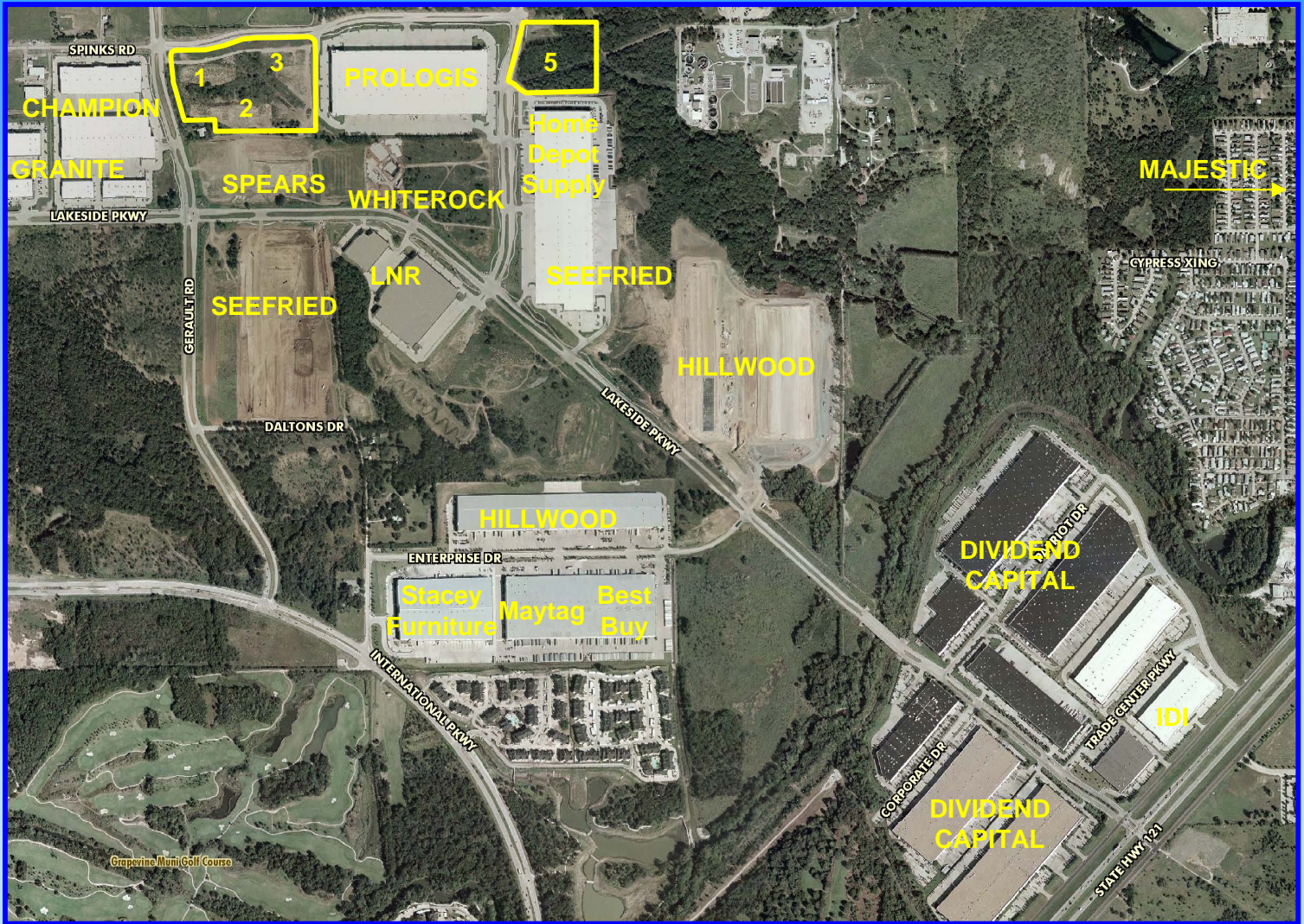


CornerStone One Land Spinks and Gerault, Flower Mound, Texas

± 22.62 Acres



Location:

- Prominent location in the center of the D/FW Metrolpex
- Direct access to Lakeside Parkway, SH 121
- 2 miles from D/FW International Airport
- Close proximity to USPO Bulk Mail Center and D/FW Airport freight areas
- 6 miles to Interstate 35
- Outstanding demographics in surrounding communities
- Land sites and BTS facilities available for sale or lease

CBRE

CB RICHARD ELLIS

5430 LBJ Freeway, Suite 1100

Dallas, Texas 75240

T 972.458.5220 F 972.458.4947

www.cbre.com

For more information contact:

Dave Anderson

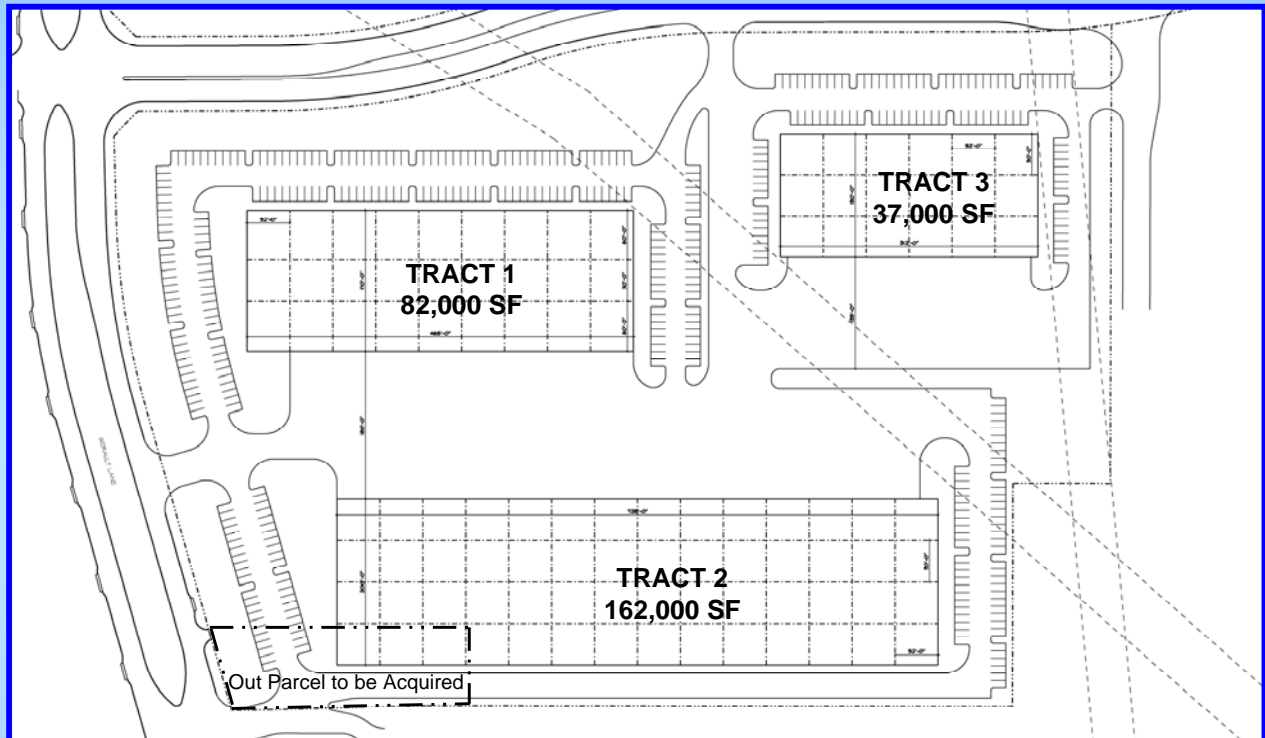
Executive Vice President

972.458.5220

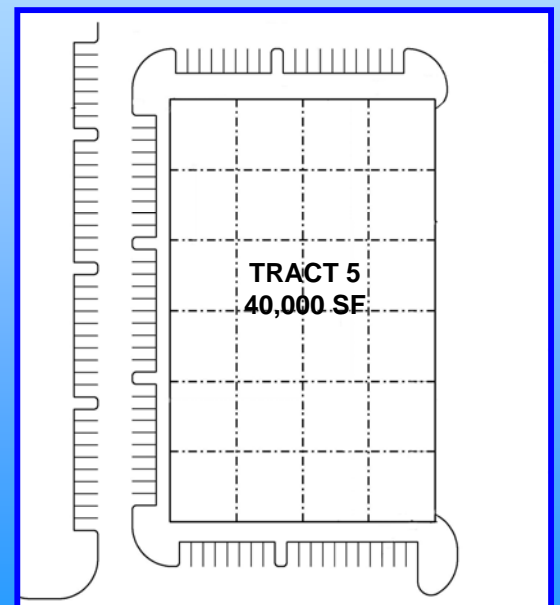
dave.anderson@cbre.com

CornerStone One Land Spinks and Gerault, Flower Mound, Texas

± 22.62 Acres



| | ACRES | BUILDING |
|--------------|-----------------|-------------------|
| TRACT 1 | 5.30 AC | 82,000 SF |
| TRACT 2 | 10.15 AC | 162,000 SF |
| TRACT 3 | 3.97 AC | 37,000 SF |
| TRACT 5 | 3.20 AC | 40,000 SF |
| TOTAL | 22.62 AC | 321,000 SF |



CBRE

CB RICHARD ELLIS

5430 LBJ Freeway, Suite 1100

Dallas, Texas 75240

T 972.458.5220 F 972.458.4947

www.cbre.com

For more information contact:

Dave Anderson

Executive Vice President

972.458.5220

dave.anderson@cbre.com