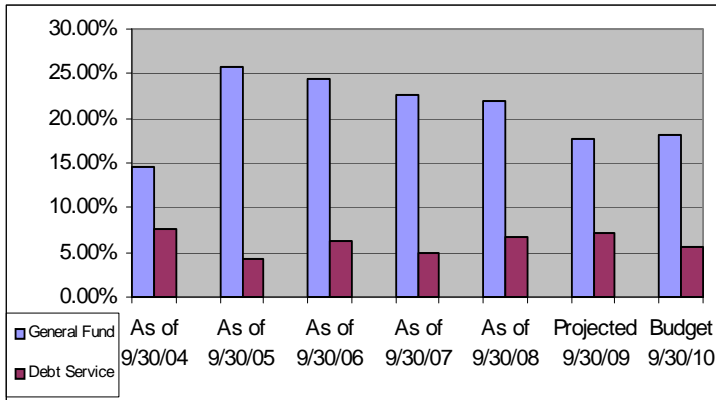


FINANCIAL MEASUREMENTS DASHBOARD

FISCAL YEAR 2008-2009/ FOURTH QUARTER

UNRESERVED FUND BALANCE



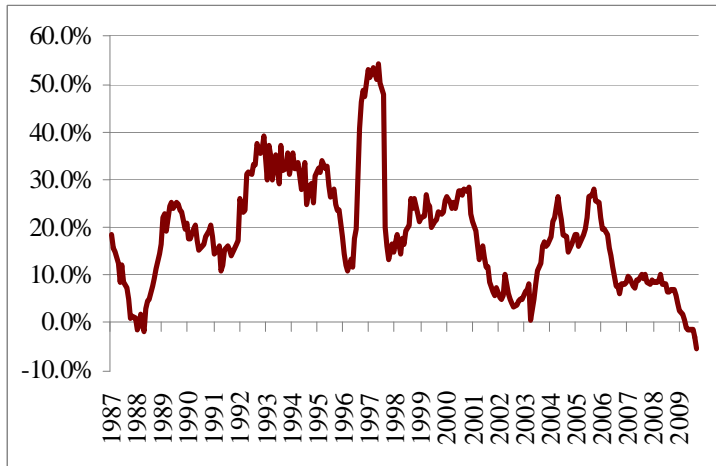
COMMERCIAL AV VS. TOTAL AV

Year	Total AV	Commercial AV	% of Total
2004-2005	\$5,076,150,138	\$500,968,939	9.87%
2005-2006	\$5,341,955,026	\$574,617,850	10.76%
2006-2007	\$5,679,697,906	\$701,116,151	12.34%
2007-2008	\$6,411,155,818	\$1,183,350,084	18.46%
2008-2009	\$6,728,379,013	\$1,295,025,338	19.25%
2009-2010	\$6,861,101,295	\$1,269,454,779	18.50%

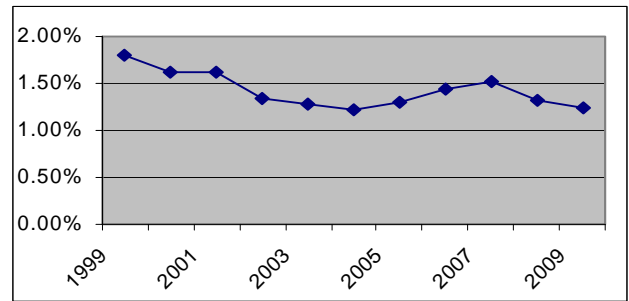
PERMITS

FY	New Residential	New Commercial
2000	\$270,625,997	107
2001	\$266,427,598	103
2002	\$167,755,303	111
2003	\$135,534,900	95
2004	\$122,644,757	64
2005	\$111,489,526	91
2006	\$75,320,884	84
2007	\$56,962,300	104
2008	\$39,801,623	111
2009	\$18,308,454	52

CHANGE IN SALES TAX REVENUE 12 MONTH MOVING AVERAGE

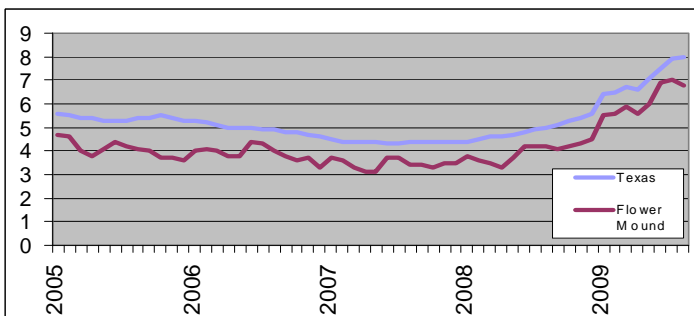


NET DEBT VS. AV



ECONOMIC CLIMATE

UNEMPLOYMENT RATE



DFW CONSUMER PRICE INDEX

Year	Annual Avg.	% Change	Dec-Dec % Chg.
2002	182.68	1.35%	1.63%
2003	176.27	2.08%	1.15%
2004	178.7	1.38%	2.49%
2005	184.68	3.35%	4.59%
2006	189.99	2.87%	0.00%
2007	193.25	1.71%	4.60%
2008	201.75	4.40%	0.71%



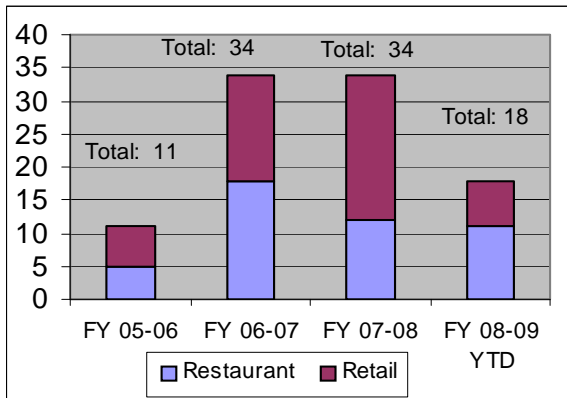
PERFORMANCE MEASURES DASHBOARD

FISCAL YEAR 2008-2009/FOURTH QUARTER

CODE ENFORCEMENT

	2006	2007	2008	2009
	# Cases	# Cases	# Cases	# Cases
Q1	367	827	1010	1278
Q2	453	1063	1263	1424
Q3	554	1004	1346	1535
Q4	588	761	898	n/a
Total	1962	3655	4517	4237

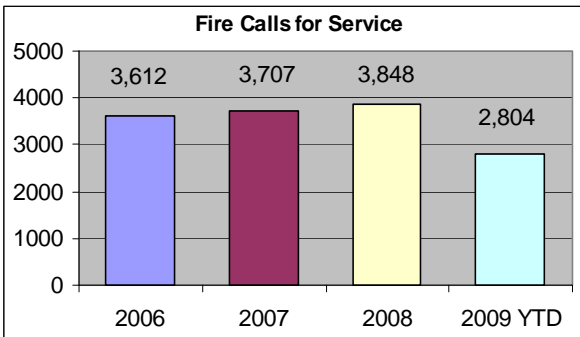
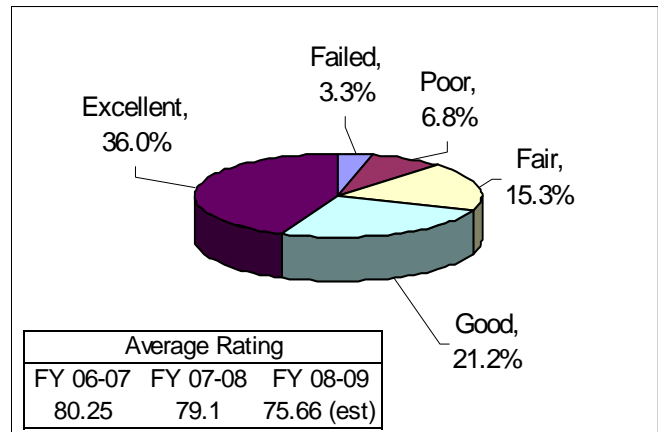
NEW RESTAURANTS & RETAIL ESTABLISHMENTS



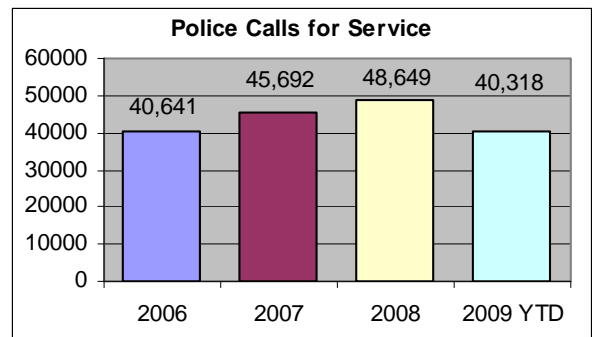
COMMUNITY SERVICES

PERFORMANCE MEASURE	FY 05-06 ACTUAL	FY 06-07 ACTUAL	FY 07-08 ACTUAL	FY 08-09 ESTIMATE
Acre of park per 1000 citizens	9.91	10.34	10.26	10.16
CAC Avg. Monthly Memberships	N/A	N/A	761	883
CAC Active Annual Memberships			1,175	763
Average age: (years) playground equipment	6.23	7.23	6.65	6.48
Trail miles per 1000 citizens	0.52	0.51	0.52	0.53

AVERAGE STREET RATING



PUBLIC SAFETY



Year	Priority 1 Fire	EMS
2000	n/a	n/a
2005	6:24	6:08
2006	6:49	6:26
2007	6:24	5:59
2008	6:05	5:58
2009 YTD	6:15	5:31

Year	NCTCOG Flower Mound Population	Total Authorized Police	Police per 1,000	Total Certified Firefighters	Firefighters per 1,000
1990	15,527	26	1.67	18	n/a
2000	50,702	53	1.05	57	1.12
2006	61,550	69	1.12	60	0.97
2007	62,350	69	1.11	60	0.96
2008	62,450	85	1.36	60	0.96
2009	62,800	85	1.35	87	1.39

Year	Priority 1	Priority 2
2002 ³	4:45	5:45
2003	4:27	5:19
2004	4:16	5:22
2005	4:29	5:22
2006	4:30	5:15
2007	4:20	5:02
2008	4:08	4:47
2009 YTD	4:09	4:06