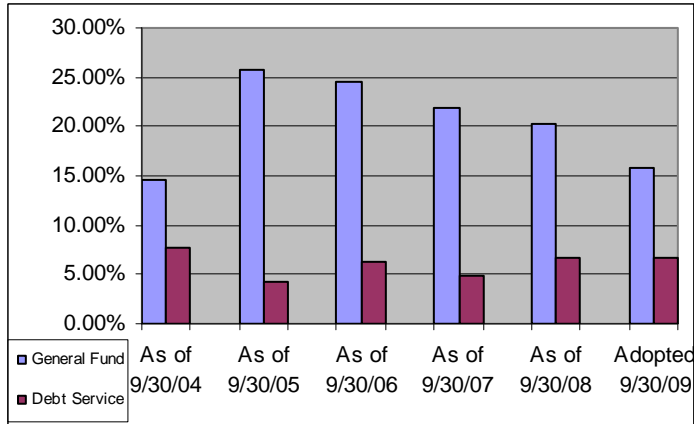


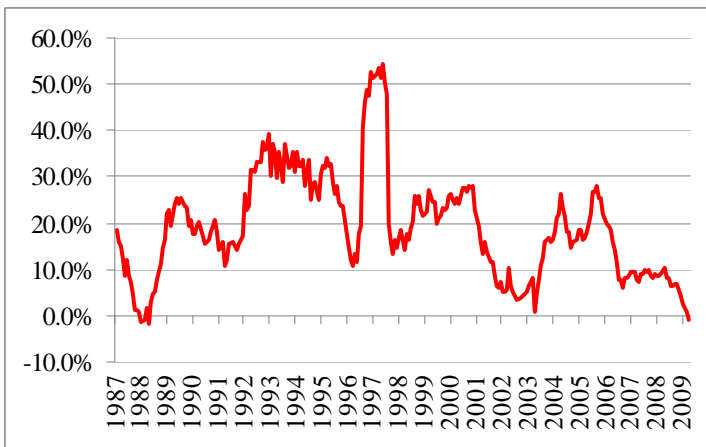
TOWN OF FLOWER MOUND

FY 08-09/ QUARTER 2 DASHBOARD FINANCIAL MEASUREMENTS & DATA

UNRESERVED FUND BALANCE



CHANGE IN SALES TAX REVENUE 12 MONTH MOVING AVERAGE



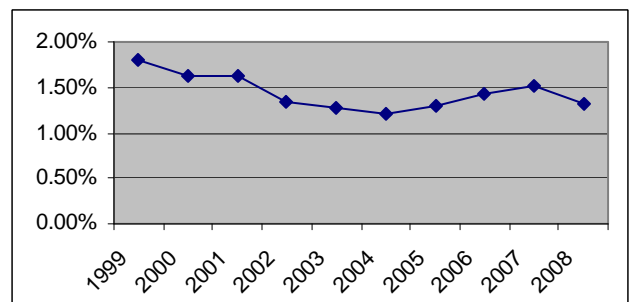
COMMERCIAL AV VS. TOTAL AV

Year	Total AV	Commercial AV	% of Total
2004-2005	\$5,076,150,138	\$500,968,939	9.87%
2005-2006	\$5,341,955,026	\$574,617,850	10.76%
2006-2007	\$5,679,697,906	\$701,116,151	12.34%
2007-2008	\$6,411,155,818	\$1,183,350,084	18.46%
2008-2009	\$6,728,379,013	\$1,295,025,338	19.25%

PERMITS

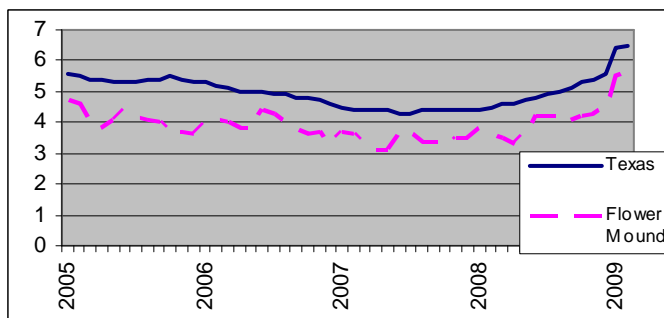
Year	New Residential	New Commercial
2000	1079	107
2001	990	103
2002	558	111
2003	454	95
2004	412	64
2005	321	91
2006	166	84
2007	115	104
2008	69	111
2009 YTD	20	28

NET DEBT VS. AV



ECONOMIC CLIMATE

UNEMPLOYMENT RATE



DFW CONSUMER PRICE INDEX

Year	Annual Avg.	% Change	Dec-Dec % Chg.
2002	182.68	1.35%	1.63%
2003	176.27	2.08%	1.15%
2004	178.7	1.38%	2.49%
2005	184.68	3.35%	4.59%
2006	189.99	2.87%	0.00%
2007	193.25	1.71%	4.60%
2008	201.75	4.40%	0.71%



TOWN OF FLOWER MOUND

FY 08-09/QUARTER 2 DASHBOARD

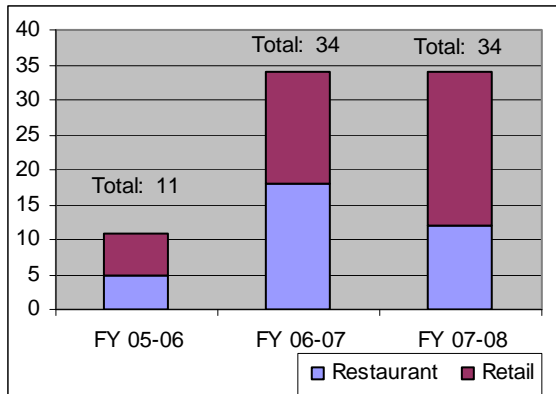
PERFORMANCE MEASURES

CODE ENFORCEMENT

	2006	2007	2008	2009
	# Cases	# Cases	# Cases	# Cases
Q1	367	827	1010	1278
Q2	453	1063	1263	n/a
Q3	554	1004	1346	n/a
Q4	588	761	898	n/a
Total	1962	3655	4517	1278

* 85% of Total Cases were Proactive
 * 72% of Commercial Cases were Proactive

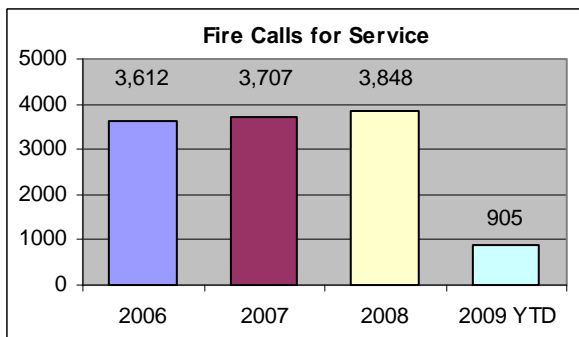
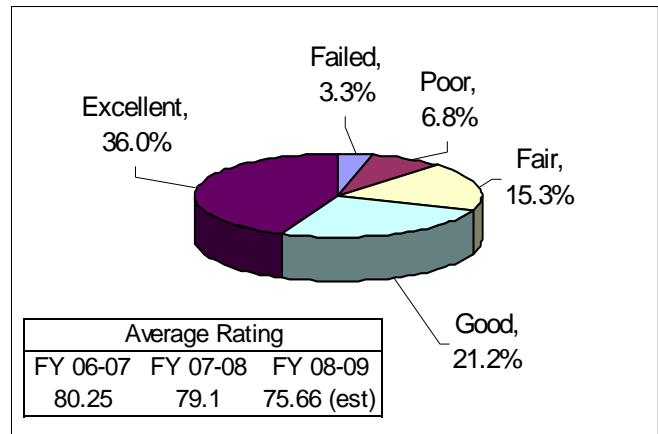
NEW RESTAURANTS & RETAIL ESTABLISHMENTS



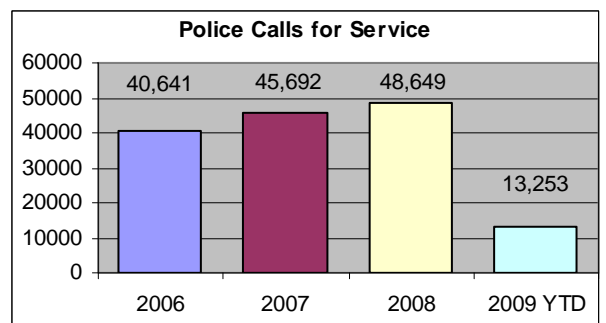
COMMUNITY SERVICES

PERFORMANCE MEASURE	FY 05-06 ACTUAL	FY 06-07 ACTUAL	FY 07-08 ACTUAL	FY 08-09 ESTIMATE
Acre of park per 1000 citizens	9.91	10.34	10.26	10.16
CAC Memberships	N/A	N/A	1,639	2,085
Average age: (years) playground equipment	6.23	7.23	6.65	6.48
Trail miles per 1000 citizens	0.52	0.51	0.52	0.53

AVERAGE STREET RATING



PUBLIC SAFETY



Year	NCTCOG Flower Mound Population	Total Authorized Police	Police per 1,000	Total Certified Firefighters	Firefighters per 1,000
1990	15,527	26	1.67	18	n/a
2000	50,702	53	1.05	57	1.12
2006	61,550	69	1.12	60	0.97
2007	62,350	69	1.11	60	0.96
2008	62,450	85	1.36	60	0.96

Year	Priority 1 Fire	EMS
2000	n/a	n/a
2005	6:24	6:08
2006	6:49	6:26
2007	6:24	5:59
2008	6:05	5:58
2009 YTD	6:08	5:50

Year	Priority 1 CFS	Priority 2 CFS
2002 ³	4:45	5:45
2003	4:27	5:19
2004	4:16	5:22
2005	4:29	5:22
2006	4:30	5:15
2007	4:20	5:02
2008	4:08	4:47
2009 YTD	4:14	4:02