



W. Windsor Drive Extension and Park

Town of Flower Mound

90% Public Meeting
December 14, 2011



Introductions

- **Town of Flower Mound**
- **Kimley-Horn and Associates, Inc.**
 - Nathan Ante, P.E. – Project Manager/Engineer
 - Brian Shamburger, P.E., PTOE – Traffic
 - Misty Christian, P.E., CFM - Drainage
 - John Fielder, RLA – Landscape Architect
 - Brad Tribble, P.E. – Quality Control/Assurance



Meeting Purpose and Agenda

- Review Schedule and Funding
- Summarize Activity Since 60% Public Meeting
- 90% Design Overview
- Next Steps



Project Schedule

- *June 2011 – Design Begins*
- *September 28, 2011 – 30% Public Meeting*
- *November 16, 2011 – 60% Public Meeting*
- **December 14, 2011 – 90% Public Meeting**
- **March/April 2012 (Tentative) – Award Project**
- **Summer 2012 (Tentative) – Construction Begins**
- **Summer 2013 (Tentative) – Construction Ends**



Funding – NCTCOG Sustainable Development Grant

- April 2009: Call for Projects
- October 2009: Project Selection
- August 2010: Council approved resolution in support
- Additional Grant Information:
www.nctcog.org/trans/sustdev/
- Project Cost - \$3.7 million



Activity Since 60% Public Meeting

- Finalized Drainage Study and Design
- Evaluated 60% Comments and Received Final Council Direction
- Met with NCTCOG
- Developing 90% Plan Set



90% Design

- Roadway ROW
- Park Area

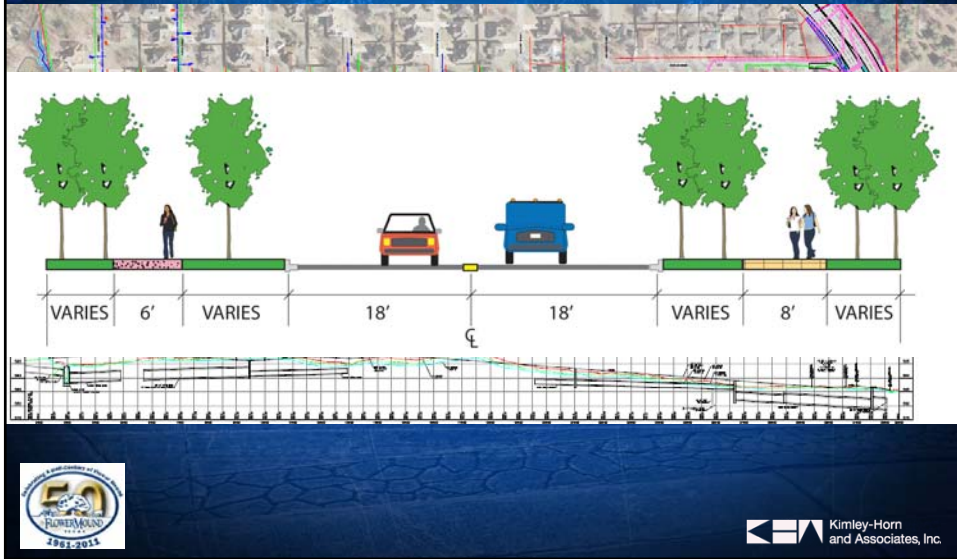


90% Design - Roadway ROW

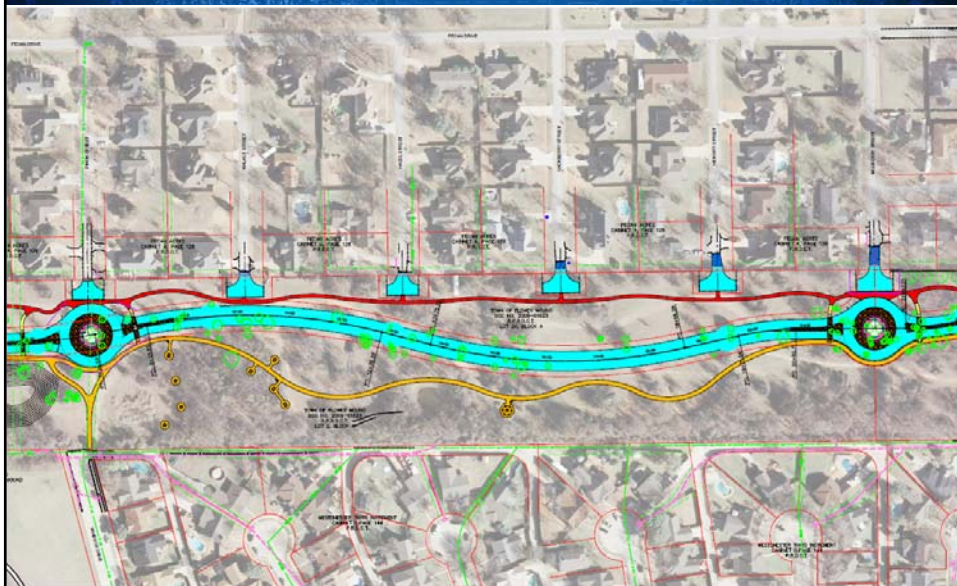
- Alignment and Typical Section – No Change
- **Roundabouts – Revised**
- **Connections to Pecan Acres - Revised**
- Hammerheads – No Change
- **Pedestrian Crossing @ Pinon – Shifted West**
- FM 2499 Improvements – No Change
- **Drainage – Finalized Design**
- Landscaped Island – No Change

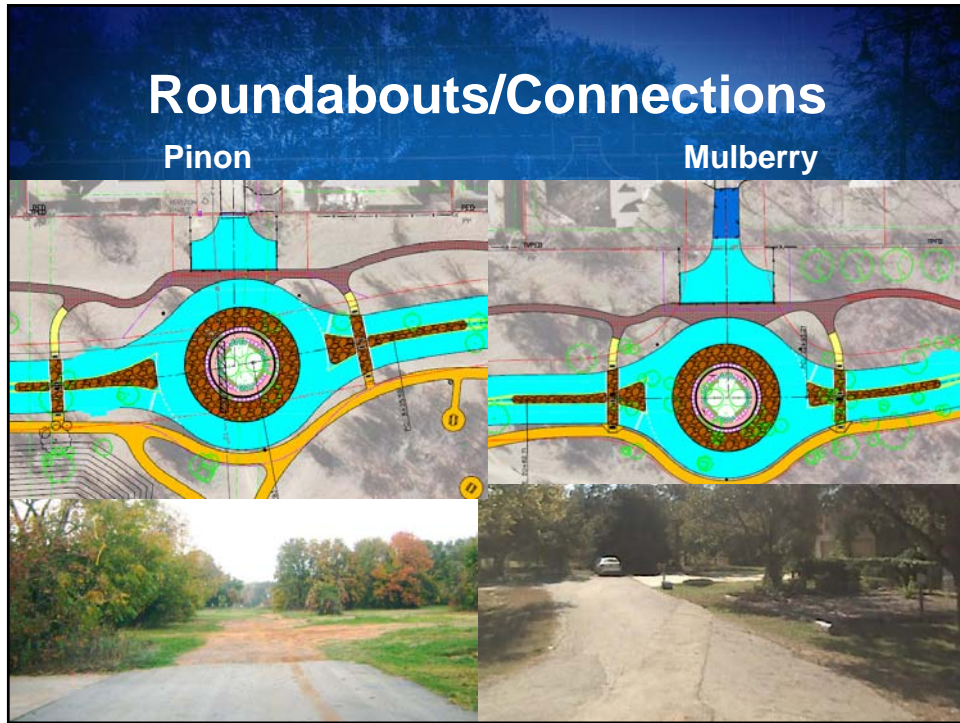


90% Design – Roadway



Roundabouts/Connections (90% Design)



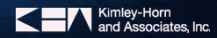


90% Design - Park Area

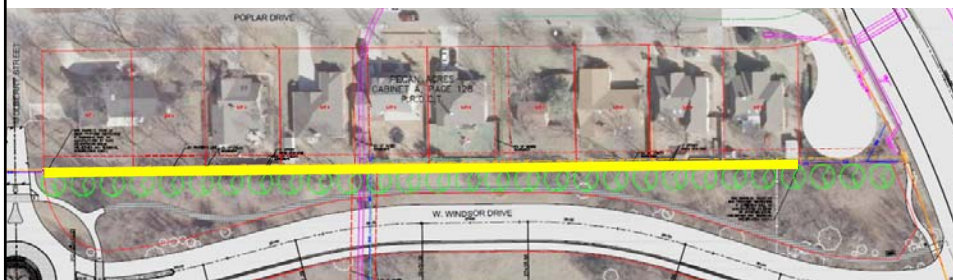
- **Trails (6' Granite, 8' Concrete) – Finalized Alignment**
- **Other Amenities – No Change**
 - Picnic Areas, Trash Receptacles, Benches
 - Pet Waste Stations
 - Trail Markers, Kiosk
 - Practice Disc Golf Course
- **Screening Wall – Finalized Location**

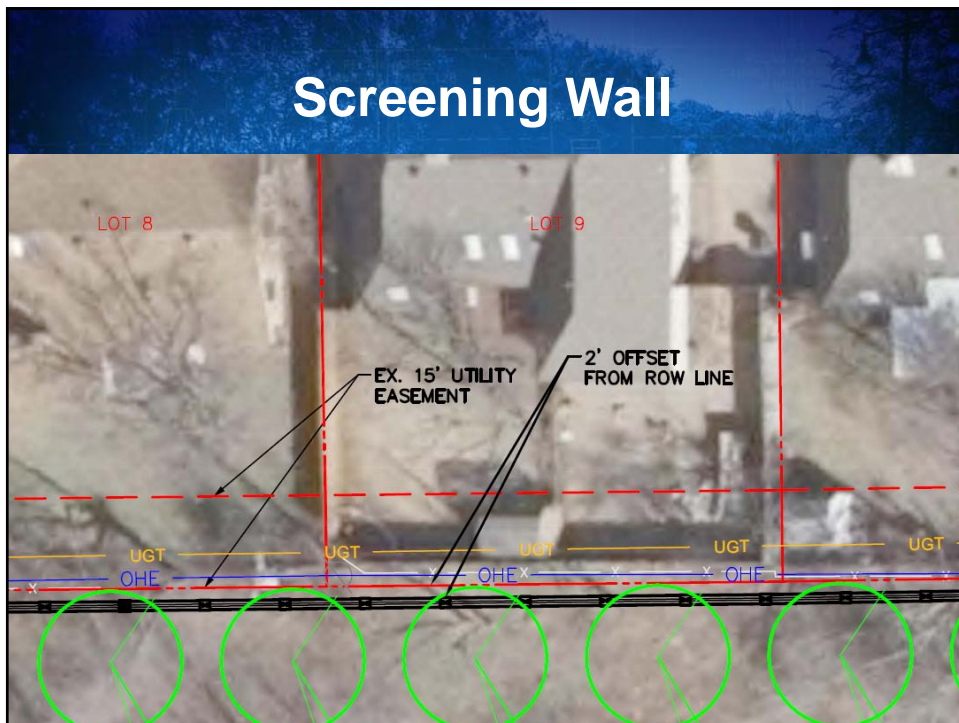



90% Design – Park Area



Screening Wall





Next Steps

- **Gather Feedback**
- **Meet with TxDOT**
- **Finalize Construction Plans**
- **Bid Project**



TOWN OF FLOWER MOUND
DOCUMENT NO. 2009-01023
REPAIR AND
IMPROVEMENTS
TO THE BLOCKS

Feedback



TOWN OF FLOWER MOUND
DOCUMENT NO. 2009-01023
REPAIR AND
IMPROVEMENTS
TO THE BLOCKS